

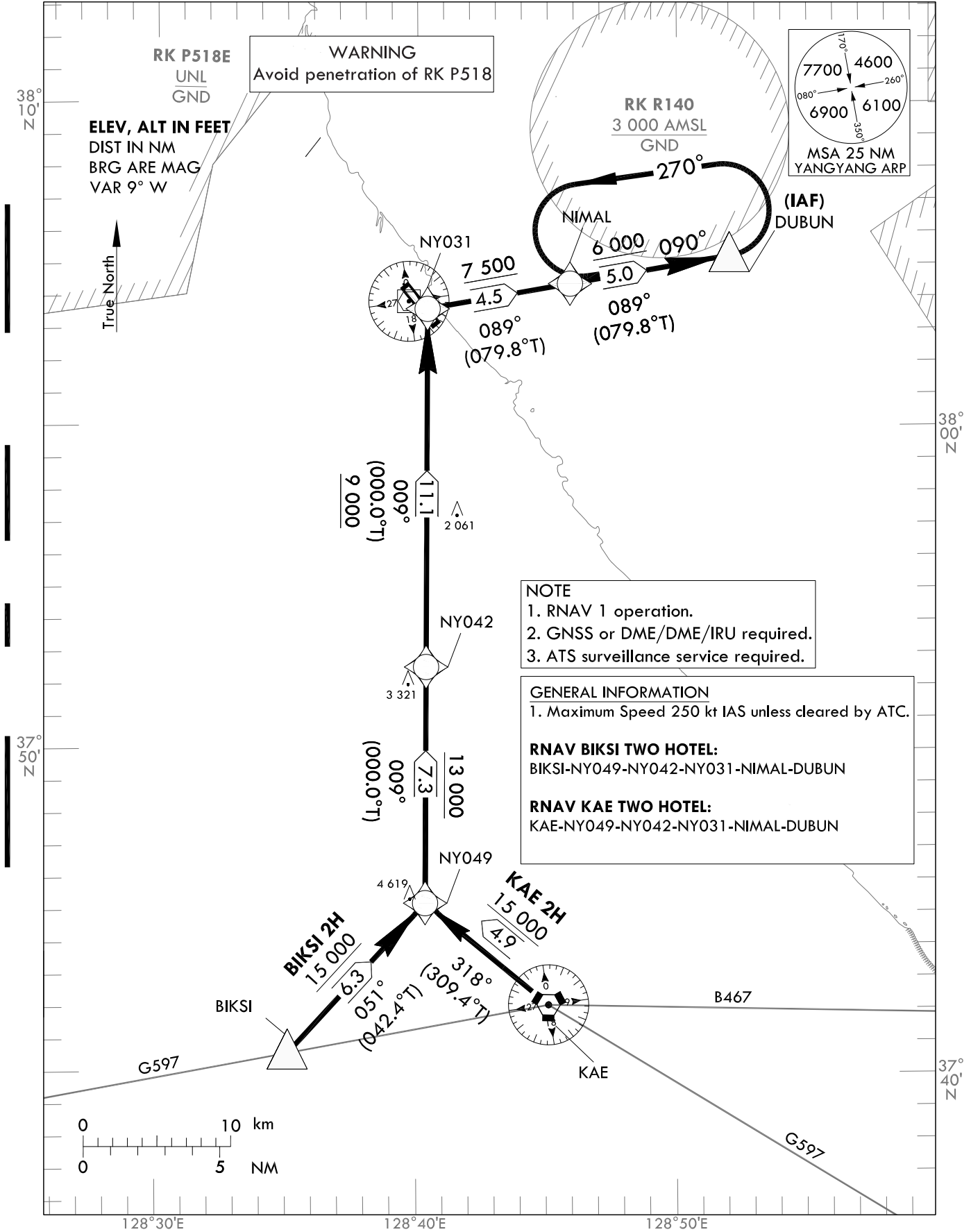
**STANDARD ARRIVAL
CHART INSTRUMENT
CHART(STAR) - ICAO**

TRANSITION ALT 14 000
TRANSITION LVL FL 140

GANGNEUNG DEP 124.6
YANGYANG TWR 118.85
124.375

YANGYANG/Intl(RKNY)
RWY 33
RNAV KAE 2H
RNAV BIKSI 2H

Note : Arrival under ICAO Flight Procedures.



Change : Information of standard instrument arrival procedure for RWY 33.

YANGYANG Intl(RKNY)
RWY 33
RNAV KAE 2H
RNAV BIKSI 2H

AERONAUTICAL DATA TABULATION

Standard Instrument Arrival Procedure Coding Tables

Serial Number	Path Descriptor	Waypoint Identifier	Fly-over	Course/Track °M(°T)	Distance (NM)	Turn direction	Altitude (ft)	Speed (kt)	Coordinates	VPA/TCH*	Navigation specification	Remarks
001	IF	KAE	-	-	-	-	-	-	37°42'02.8"N 128°45'13.6"E	-	RNAV 1	-
002	TF	NY049	-	318(309.4)	4.9	-	+FL 150	-	37°45'11.2"N 128°40'24.7"E	-	RNAV 1	-
003	TF	NY042	-	009(000.0)	7.3	-	+13 000	-	37°52'29.4"N 128°40'25.1"E	-	RNAV 1	-
004	TF	NY031	-	009(000.0)	11.1	-	+9 000	-	38°03'34.1"N 128°40'25.8"E	-	RNAV 1	-
005	TF	NIMAL	-	089(079.8)	4.5	-	+7 500	-	38°04'21.6"N 128°45'59.8"E	-	RNAV 1	-
006	TF	DUBUN	-	089(079.8)	5.0	-	+6 000	-	38°05'14.5"N 128°52'13.8"E	-	RNAV 1	IAF

Serial Number	Path Descriptor	Waypoint Identifier	Fly-over	Course/Track °M(°T)	Distance (NM)	Turn direction	Altitude (ft)	Speed (kt)	Coordinates	VPA/TCH*	Navigation specification	Remarks
001	IF	BIKSI	-	-	-	-	-	-	37°40'32.0"N 128°35'04.0"E	-	RNAV 1	-
002	TF	NY049	-	051(042.4)	6.3	-	+FL 150	-	37°45'11.2"N 128°40'24.7"E	-	RNAV 1	-
003	TF	NY042	-	009(000.0)	7.3	-	+13 000	-	37°52'29.4"N 128°40'25.1"E	-	RNAV 1	-
004	TF	NY031	-	009(000.0)	11.1	-	+9 000	-	38°03'34.1"N 128°40'25.8"E	-	RNAV 1	-
005	TF	NIMAL	-	089(079.8)	4.5	-	+7 500	-	38°04'21.6"N 128°45'59.8"E	-	RNAV 1	-
006	TF	DUBUN	-	089(079.8)	5.0	-	+6 000	-	38°05'14.5"N 128°52'13.8"E	-	RNAV 1	IAF

Holding Identification	Path Descriptor	Waypoint Identifier	Fly-over	Course/Track °M(°T)	Turn direction	Altitude (ft)	Speed (kt)	Coordinates	VPA/TCH*	Navigation specification	Remarks
RNAV KAE 2H	HM	DUBUN	Y	090(081.7)	1	L	@6 000	38°05'14.5"N 128°52'13.8"E	-	RNAV 1	1 Min (Outbound Leg)
RNAV BIKSI 2H	HM	DUBUN	Y	090(081.7)	1	L	@6 000	38°05'14.5"N 128°52'13.8"E	-	RNAV 1	1 Min (Outbound Leg)

* The term TCH equates to the use of the term RDH, within this context of the FAS data block.

Change : Information of standard instrument arrival procedure for RWY 33.